

CSS CHAROLAIS

11TH ANNUAL BULL SALE

SATURDAY, MARCH 28, 2009

1:30 P.M. (CST)

AT THE RANCH, PAYNTON, SASK.

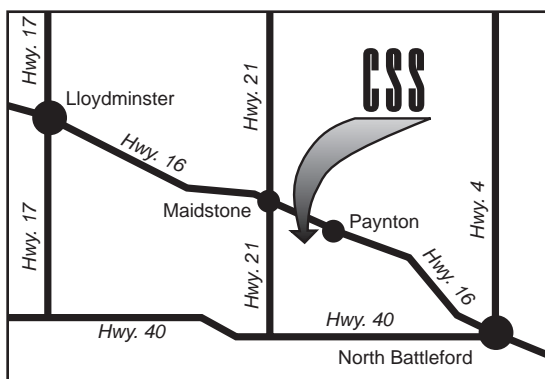
(2 miles west on Highway 16, then at the sign,
1/2 mile south and 1/2 mile west)



SALE DAY PHONES

(306) 895-4316 (BARN) (306) 893-7443 (CAM'S CELL)
(403) 350-9858 (TIM'S CELL) (403) 650-9028 (BRENT'S CELL)

View the catalogue online at:
www.csscharolais.ca



SALE STAFF

Brent Carey, Auctioneer(403) 549-2478
.....cell: (403) 650-9028
Tim Bullick(403) 224-3341, cell: (403) 350-9858
Don Johnson(306) 445-9998, cell: (306) 441-0989

ACCOMMODATIONS

Paynton Place Truck Stop & Motel
(306) 895-2111

OR Call ranch for a list of available rooms.
(306) 895-4316

**Pictures of bulls were taken beginning of January.*

NO BULLS SOLD PRIOR TO THE SALE!

PLEASE REMEMBER TO BRING
YOUR CATALOGUE TO THE SALE!

REFERENCE SIRES



PCC Navigator 403P

Ref	PCC Navigator 403P		
PCC 403P	MC289502	HORNED	JAN. 3/04
MVX Cougarhill Hank 720G MC200052	Rainbow Mr Cyrano 32D MVX Edith 806X		
Prairie Cove Miss 802H FC257901	Willowvale Projector 90C Prairie Cove Miss 510E		

BW 108 lbs										
EPDs	BW	WW	YW	M	TM	CWT	REA	FAT	LY	MARB
	2.1	33	64	25.7	42	-4	0.02	-0.12	0.19	0.02



CSS Sir Clear Cut 14N

Ref	CSS Sir Clear Cut 14N		
CSS 14N	MC279930	POLLED	FEB. 2/03
DYV Clearcut 14H PMC212859	Keys Polled Compass Bar 19 Futurist 201B		
Merit Addie 5078E FC222272	HTA Whitehot 105A MTL Addie 24Z		

BW 108 lbs										
EPDs	BW	WW	YW	M	TM	CWT	REA	FAT	LY	MARB
	1.8	36	77	20.7	39	12	0.13	0.24	-0.07	0.04

Plan to be our guests for complimentary lunch!

Coffee and donuts compliments of:



HANCOCK PETRO PRODUCTS INC.

Box 1339, Lloydminster, AB S9V 1G2

Gerry Wolfe, Sales Co-ordinator

Phone (780) 875-2495, Cell. (780) 871-9426, Res. (306) 825-7340

E-mail: thancock@bordercity.com

REFERENCE SIRES



KAYR Grid Grid Iron 400S

Ref

KAYR Grid Grid Iron 400S

KAYR 400S MC304093 POLLED FEB. 2/06

M6 Grid Maker 104 PET WCR Sir Tradition 066
 PMC288074 VCR Miss Mac IV 317

KAYR Miss 400P KAYR Tex 26L
 PFC353741 KAYR Miss Bedrock 823M

BW 94 lbs

EPDs	BW	WW	YW	M	TM	CWT	REA	FAT	LY	MARB
	0.5	40	80	24.1	44	0	-0.04	0.30	-0.30	0.00



MXS Algonquan 506R

Ref

MXS Algonquan 506R

MXS 506R MC299205 POLLED JAN. 7/05

LT Rio Blanco 1234P WCR Prime Cut 764 PLD
 PMC278536 LT Prairie Maid 4054

MXS Lowntree 1K LT Wyoming Wind 4020 PLD
 PFC287192 MXS Lowntree 833H

BW 100 lbs

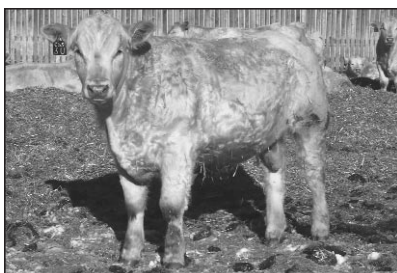
EPDs	BW	WW	YW	M	TM	CWT	REA	FAT	LY	MARB
	2.4	50	106	19.4	45	15	0.18	1.38	-0.80	0.11



**P.O. BOX 330 - 507 HIGHWAY 21 N.
 MAIDSTONE, SK. SOM 1M0**

OFFICE 306 893 2935 FAX 306 893 2410

YEARLINGS



CSS Sir Algonquan 3U

1

CSS Sir Algonquan 3U

CSS 3U MC320641 POLLED JAN. 10/08

MXS Algonquan 506R
PMC299205

LT Rio Blanco 1234 P
MXS Lowntee 1K

CSS Lady Stockman Two 29H HTA Stockman PLD 534E
PFC258203 Prairiewind Sheree 17Y

BW 105 lbs	205 DW 706 lbs									
EPDs	BW	WW	YW	M	TM	CWT	REA	FAT	LY	MARB
	3.5	41	89	20.2	41	10	0.18	0.44	-0.07	0.03



CSS Sir Navigator 8U

2

CSS Sir Navigator 8U

CSS 8U MC320681 POLLED JAN. 11/08

PCC Navigator 403P
MC289502

MXV Cougarhill Hank 720G
Prairie Cove Miss 802H

CSS Lady Wind 7P
PFC337721

CSS First Wind 1L
CSS B Double A 117M

BW 92 lbs	205 DW 537 lbs									
EPDs	BW	WW	YW	M	TM	CWT	REA	FAT	LY	MARB
	0.1	23	53	23.5	35	-11	0.03	-0.11	0.30	0.03

CAN YOU REALLY EAT THAT?

A man kills a deer and takes it home to cook for dinner. Both he and his wife decide that they won't tell the kids what kind of meat it is, but will give them a clue and let them guess. The kids were eager to know what the meat was on their plates, so they begged their dad for a clue. "Well," he said, "It's what mommy calls me sometimes."

The little girl screams to her brother, "Don't eat it, it's ass****."



CSS Sir No Doubt 11U

3

CSS Sir No Doubt 11U

CSS 11U MC320690 POLLED JAN. 12/08

EC No Doubt 2022P
PMC304019

M6 Grid Maker 104 PET
EC Lady Duke 2022P

Bar K Pure Moment 514R
PFC348883

KAYR Tex 26L
Bar K Pure Moment 21L

BW 102 lbs	205 DW 651 lbs									
EPDs	BW	WW	YW	M	TM	CWT	REA	FAT	LY	MARB
	1.7	48	88	18.8	43	13	0.01	0.59	-0.50	0.06



CSS Sir Algonquan 13U

4

CSS Sir Algonquan 13U

CSS 13U MC320678 POLLED JAN. 14/08

MXS Algonquan 506R
PMC299205

LT Rio Blanco 1234 P
MXS Lowntree 1K

CSS Lady First Wind 89N
PFC330654

CSS First Wind 1L
CSS Lady Red Sky 53H

BW 110 lbs	205 DW 754 lbs									
EPDs	BW	WW	YW	M	TM	CWT	REA	FAT	LY	MARB
	2.9	51	104	17.3	43	17	0.23	0.97	-0.47	0.09

PRAIRIE
COVE
CONSULTING

**Tim, Wanda, Tyler &
Tanisha Bullick**

(403) 224-3341

(403) 350-9858

Box 297, Bowden, Alberta TOM OKO

YEARLINGS



CSS Sir Gridmaker 14U

5

CSS Sir Gridmaker 14U

CSS 14U MC322277 POLLED JAN. 15/08

KAYR Grid Grid Iron 400S M6 Grid Maker 104 PET
 PMC304093 KAYR Miss 400P

CSS Lady Navigator 15S PCC Navigator 403P
 FC353685 CSS Lady Stockman Two 29H

BW 90 lbs	205 DW 575 lbs									
EPDs	BW	WW	YW	M	TM	CWT	REA	FAT	LY	MARB
	2.0	33	69	23.7	40	-5	-0.06	0.11	-0.12	0.00



CSS Sir Navigator 16U

6

CSS Sir Navigator 16U

CSS 16U MC320688 HORNED JAN. 17/08

PCC Navigator 403P MVX Cougarhill Hank 720G
 MC289502 Prairie Cove Miss 802H

CSS Lady Rain 81R HTA PLD Rain 258M
 PFC348730 CSS Lady Stockman 10H

BW 102 lbs	205 DW 617 lbs									
EPDs	BW	WW	YW	M	TM	CWT	REA	FAT	LY	MARB
	3.7	33	69	21.6	38	2	0.13	-0.33	0.46	0.01

Driving to the office this morning on the interstate, I looked over to my left and there was a woman in a brand new Mustang doing 65 mph with her face up next to her rearview mirror putting on her eyeliner! I looked away for a couple seconds and when I looked back, she was halfway over in my lane, still working on her makeup!

It scared me so badly, I dropped my electric shaver, which knocked the donut out of my hand. In all the confusion of trying to straighten out the car using my knees against the steering wheel, my cell phone got knocked away from my ear and fell in the coffee between my legs, which splashed and burned my thigh, put out my cigarette, ruined my phone, and disconnected an important call!

Darned women drivers!

YEARLINGS



CSS Sir Algonquan 19U

7

CSS Sir Algonquan 19U

CSS 19U MC320644 POLLED JAN. 19/08

MXS Algonquan 506R LT Rio Blanco 1234 P
 PMC299205 MXS Lowntree 1K

CSS Lady Stockman 48J HTA Stockman PLD 534E
 FC272805 SLB Little Lake 14Y

BW 95 lbs	205 DW 716 lbs									
EPDs	BW	WW	YW	M	TM	CWT	REA	FAT	LY	MARB
	0.6	37	80	22.1	41	5	0.12	0.49	-0.15	0.02

8

CSS Sir Gridmaker 23U

CSS 23U MC322278 POLLED JAN. 21/08

KAYR Grid Grid Iron 400S M6 Grid Maker 104 PET
 PMC304093 KAYR Miss 400P

CSS Lady Jazz 84R Char-Mo Jazz 31N
 PFC348724 PVF B Double A Amber 8G

BW 96 lbs	205 DW 717 lbs									
EPDs	BW	WW	YW	M	TM	CWT	REA	FAT	LY	MARB
	2.5	38	74	20.6	39	2	0.03	0.14	-0.07	0.01



CSS Sir Clearcut 29U

9

CSS Sir Clearcut 29U

CSS 29U MC320693 POLLED JAN. 22/08

CSS Sir Clear Cut 14N DYV Clearcut 14H
 PMC279930 Merit Addie 5078E

CSS Lady Navigator 84S PCC Navigator 403P
 PFC353717 CSS Lady Blazer 48M

BW 90 lbs	205 DW 787 lbs									
EPDs	BW	WW	YW	M	TM	CWT	REA	FAT	LY	MARB
	0.5	38	78	23.1	42	8	0.05	0.36	-0.26	0.02

YEARLINGS

10

CSS Sir Red Navigator 35U

CSS 35U QMC320687 HORNED JAN. 25/08

PCC Navigator 403P MVX Cougarhill Hank 720G
MC289502 Prairie Cove Miss 802H

CSS Lady Red Jazz 70R Char-Mo Jazz 31N
QPFC348719 B Double A 21E

BW 86 lbs	205 DW 629 lbs									
EPDs	BW	WW	YW	M	TM	CWT	REA	FAT	LY	MARB
	0.1	26	52	21.7	35	-11	-0.05	-0.02	0.09	0.02



CSS Sir Algonquan 41U

11

CSS Sir Algonquan 41U

CSS 41U MC320683 POLLED JAN. 26/08

MXS Algonquan 506R LT Rio Blanco 1234 P
PMC299205 MXS Lowntree 1K

CSS Lady Impressive 20P SVS Model Imp 13M
PFC338323 CSS Lady Stockman 125M

BW 108 lbs	205 DW 823 lbs									
EPDs	BW	WW	YW	M	TM	CWT	REA	FAT	LY	MARB
	3.2	55	109	19.4	47	22	0.23	0.94	-0.52	0.05

12

Char-Mo Ozzie 43U

MNS 43U MC320452 POLLED JAN. 27/08

PCC Navigator 403P MVX Cougarhill Hank 720G
MC289502 Prairie Cove Miss 802H

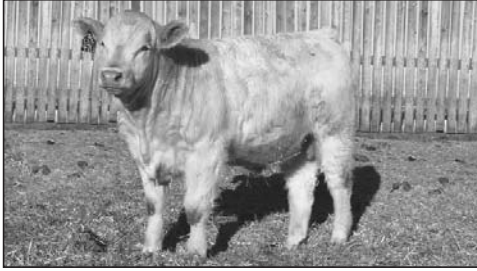
LKPR Cindianna 302N Belmont's Indiana 9J
QPFC327516 LKPR Mackenzie 6G

BW 106 lbs	205 DW 680 lbs									
EPDs	BW	WW	YW	M	TM	CWT	REA	FAT	LY	MARB
	2.1	30	61	24.7	40	-2	0.04	-0.14	0.20	0.03



CSS Sir Navigator 51U

YEARLINGS



CSS Bluegrass 47U

13

CSS Bluegrass 47U

CSS 47U MC322805 POLLED JAN. 28/08

LT Bluegrass 4017 P
PMC301565

LT Assertion 1277P
LT Pearl's Breeze 2236 P

Bar K Paris 47P
QPFC342962

KAYR Tex 26L
Bar K Velvet Crush 6H

BW 106 lbs	205 DW 712 lbs									
EPDs	BW	WW	YW	M	TM	CWT	REA	FAT	LY	MARB
	1.4	39	67	17.5	37	3	0.00	0.21	-0.21	0.00

14

CSS Sir Real Estate 49U

CSS 49U MC322883 POLLED JAN. 30/08

RGP Real Estate 129R
PMC296265

SVY Freedom PLD 307N
RGP Laurel 129L

CSS Lady Joe 66M
PFC315119

HFCC PLD Blazer 44K
CSS 20/20 16J

BW 110 lbs	205 DW 743 lbs									
EPDs	BW	WW	YW	M	TM	CWT	REA	FAT	LY	MARB
	4.5	48	95	19.3	43	15	0.18	0.08	0.08	0.02

15

CSS Sir Algonquan 50U TWIN

CSS 50U MC320647 POLLED JAN. 30/08

MXS Algonquan 506R
PMC299205

LT Rio Blanco 1234 P
MXS Lowntree 1K

CSS Lady Sunset 24K
FC292205

CSS Sir Stockman Jr 24H
RJV Miss Sylvia 337C

BW 89 lbs	205 DW 641 lbs									
EPDs	BW	WW	YW	M	TM	CWT	REA	FAT	LY	MARB
	2.1	46	90	18.6	42	10	0.10	.057	-0.34	0.02

16

CSS Sir Navigator 51U

CSS 51U MC320668 POLLED JAN. 30/08

PCC Navigator 403P
MC289502

MXV Cougarhill Hank 720G
Prairie Cove Miss 802H

CSS Lady Blazer 48M
PFC315121

HFCC PLD Blazer 44K
CSS Pebble 23J

BW 95 lbs	205 DW 755 lbs									
EPDs	BW	WW	YW	M	TM	CWT	REA	FAT	LY	MARB
	-0.3	35	71	25.8	43	5	0.09	0.36	-0.16	0.04

YEARLINGS

17

CSS Sir Navigator 53U

CSS 53U MC320660 HORNED JAN. 30/08

PCC Navigator 403P MVX Cougarhill Hank 720G
MC289502 Prairie Cove Miss 802H

CSS Lady Rocky 3P Paynes Top Cut 2L
FC337682 CSS Lady Stockman 17K

BW 98 lbs	205 DW 692 lbs									
EPDs	BW	WW	YW	M	TM	CWT	REA	FAT	LY	MARB
	1.8	34	65	20.3	37	-1	0.06	-0.14	0.24	0.00

18

CSS Sir Gridmaker 54U

CSS 54U MC322290 POLLED FEB. 1/08

KAYR Grid Grid Iron 400S M6 Grid Maker 104 PET
PMC304093 KAYR Miss 400P

CSS Lady Clear Cut 8S CSS Sir Clear Cut 14N
PFC353734 CSS Lady First Wind 1P

BW 108 lbs	205 DW 711 lbs									
EPDs	BW	WW	YW	M	TM	CWT	REA	FAT	LY	MARB
	3.7	41	85	21.8	43	4	0.04	-0.08	0.09	0.00

19

CSS Sir Gridmaker 55U

CSS 55U MC322291 POLLED FEB. 1/08

KAYR Grid Grid Iron 400S M6 Grid Maker 104 PET
PMC304093 KAYR Miss 400P

CSS Lady Stockman 41P HTA Stockman PLD 534E
PFC337663 EFH Miss Butterfield 33G

BW 93 lbs	205 DW 679 lbs									
EPDs	BW	WW	YW	M	TM	CWT	REA	FAT	LY	MARB
	0.8	35	74	23.5	41	-1	0.04	0.00	0.10	-0.02

20

CSS Sir Algonquan 56U ^{TWIN}

CSS 56U MC320682 POLLED FEB. 1/08

MXS Algonquan 506R LT Rio Blanco 1234 P
PMC299205 MXS Lowntree 1K

CSS Lady Jake 8P MVX Cougarhill Jake 767G
PFC337692 CSS Lady Stockman 52L

BW 95 lbs	205 DW 630 lbs									
EPDs	BW	WW	YW	M	TM	CWT	REA	FAT	LY	MARB
	2.2	42	90	22.5	44	13	0.22	0.66	-0.23	0.04

21

CSS Sir Algonquan 57U

CSS 57U MC320684 POLLED FEB. 2/08

MXS Algonquan 506R LT Rio Blanco 1234 P
PMC299205 MXS Lowntree 1K

CSS Lady Rocky 28P Paynes Top Cut 2L
FC337691 CSS Lady Prime EZ 46L

BW 96 lbs	205 DW 606 lbs									
EPDs	BW	WW	YW	M	TM	CWT	REA	FAT	LY	MARB
	1.2	35	78	17.3	35	1	0.07	0.57	-0.22	0.07



CSS Sir Gridmaker 60U

22

CSS Sir Gridmaker 60U

CSS 60U MC322292 POLLED FEB. 2/08

KAYR Grid Grid Iron 400S M6 Grid Maker 104 PET
 PMC304093 KAYR Miss 400P

CSS Lady Navigator 16S PCC Navigator 403P
 FC353674 CSS Lady Stockman 46G

BW 90 lbs	205 DW 734 lbs									
EPDs	BW	WW	YW	M	TM	CWT	REA	FAT	LY	MARB
	1.9	39	76	22.4	42	1	-0.02	0.19	-0.19	0.00



CSS Sir Navigator 61U

23

CSS Sir Navigator 61U

CSS 61U MC320689 POLLED FEB. 2/08

PCC Navigator 403P MVX Cougarhill Hank 720G
 MC289502 Prairie Cove Miss 802H

CSS Lady Clear Cut 82R CSS Sir Clear Cut 14N
 PFC348763 CSS Lady Stockman 125M

BW 108 lbs	205 DW 787 lbs									
EPDs	BW	WW	YW	M	TM	CWT	REA	FAT	LY	MARB
	3.8	40	79	22.9	43	9	0.16	-0.07	0.22	0.01

24

CSS Sir Clearcut 62U

CSS 62U MC320665 POLLED FEB. 2/08

CSS Sir Clear Cut 14N DYV Clearcut 14H
 PMC279930 Merit Addie 5078E

CSS Lady Stockman 22M HTA Stockman PLD 534E
 FC315066 SLB Little Lake 71E

BW 112 lbs	205 DW 817 lbs									
EPDs	BW	WW	YW	M	TM	CWT	REA	FAT	LY	MARB
	3.8	43	88	23.7	45	18	0.24	-0.11	0.29	-0.01

YEARLINGS

25

CSS Sir Red Navigator 65U

CSS 65U QMC320664 HORNED FEB. 6/08

PCC Navigator 403P MVX Cougarhill Hank 720G
MC289502 Prairie Cove Miss 802H

CSS Lady Erixons Bronson 69L Erixon's Bronson 208H
QSFC301718 CSS Red Sweepsteaks 17J

BW 110 lbs	205 DW 678 lbs									
EPDs	BW	WW	YW	M	TM	CWT	REA	FAT	LY	MARB
	4.8	35	73	21.5	39	2	0.15	-0.31	0.48	0.01



CSS Sir Clearcut 66U

26

CSS Sir Clearcut 66U

CSS 66U MC320671 POLLED FEB. 7/08

CSS Sir Clear Out 14N DYV Clearcut 14H
PMC279930 Merit Addie 5078E

CSS B Double A 117M HTA Stockman PLD 534E
PFC315051 B Double A 14A

BW 102 lbs	205 DW 779 lbs									
EPDs	BW	WW	YW	M	TM	CWT	REA	FAT	LY	MARB
	1.8	38	80	21.3	40	12	0.21	0.05	0.23	0.02

27

CSS Sir Clearcut 67U

CSS 67U MC320650 POLLED FEB. 8/08

CSS Sir Clear Out 14N DYV Clearcut 14H
PMC279930 Merit Addie 5078E

CSS Lady Stockman 85K HTA Stockman PLD 534E
PFC286845 CSS Prairie Skyfire 23F

BW 92 lbs	205 DW 747 lbs									
EPDs	BW	WW	YW	M	TM	CWT	REA	FAT	LY	MARB
	3.4	42	85	22.2	43	15	0.21	-0.05	0.24	-0.01

28

CSS Sir Clearcut 68U

CSS 68U MC320652 POLLED FEB. 8/08

CSS Sir Clear Out 14N DYV Clearcut 14H
PMC279930 Merit Addie 5078E

CSS Lady Stockman 85K HTA Stockman PLD 534E
PFC286845 CSS Prairie Skyfire 23F

BW 93 lbs	205 DW 681 lbs									
EPDs	BW	WW	YW	M	TM	CWT	REA	FAT	LY	MARB
	3.4	42	85	22.2	43	15	0.21	-0.05	0.24	-0.01

YEARLINGS



CSS Sir Navigator 69U

29

CSS Sir Navigator 69U

CSS 69U MC320686 HORNED FEB. 8/08

PCC Navigator 403P MVX Cougarhill Hank 720G
MC289502 Prairie Cove Miss 802H

CSS Lady Red Jazz 42R Char-Mo Jazz 31N
QPFC348721 B Double A 31E

BW 107 lbs	205 DW 795 lbs									
EPDs	BW	WW	YW	M	TM	CWT	REA	FAT	LY	MARB
	4.9	39	73	22.9	42	8	0.13	-0.07	0.19	0.02

30

CSS Sir Algonquan 78U

CSS 78U MC320667 POLLED FEB. 13/08

MXS Algonquan 506R LT Rio Blanco 1234 P
PMC299205 MXS Lowntree 1K

CSS Lady Stockman 38M HTA Stockman PLD 534E
PFC315059 CSS Lady Skyfire 27C

BW 112 lbs	205 DW 661 lbs									
EPDs	BW	WW	YW	M	TM	CWT	REA	FAT	LY	MARB
	5.6	45	95	17.8	40	10	0.22	0.13	0.23	0.02



CSS Sir Navigator 82U

31

CSS Sir Navigator 82U

CSS 82U MC320677 POLLED FEB. 14/08

PCC Navigator 403P MVX Cougarhill Hank 720G
MC289502 Prairie Cove Miss 802H

CSS B Double A 82N HTA Stockman PLD 534E
PFC327214 B Double A 2Z

BW 108 lbs	205 DW 807 lbs									
EPDs	BW	WW	YW	M	TM	CWT	REA	FAT	LY	MARB
	3.0	38	76	21.8	41	5	0.15	-0.17	0.36	0.00

YEARLINGS



CSS Sir Gridmaker 86U

32

CSS Sir Gridmaker 86U

CSS 86U MC322293 POLLED FEB. 15/08

KAYR Grid Grid Iron 400S M6 Grid Maker 104 PET
 PMC304093 KAYR Miss 400P

CSS B Double A 120M CSS Shadow 61J
 QFC315064 B Double A 33E

BW 99 lbs	205 DW 702 lbs									
EPDs	BW	WW	YW	M	TM	CWT	REA	FAT	LY	MARB
	1.1	34	68	19.2	36	-4	-0.02	0.00	0.03	-0.02

33

CSS Sir Navigator 88U

CSS 88U MC320670 POLLED FEB. 17/08

PCC Navigator 403P MVX Cougarhill Hank 720G
 MC289502 Prairie Cove Miss 802H

CSS B Double A 116M CSS Shadow 61J
 PFC315050 B Double A 2Z

BW 104 lbs	205 DW 721 lbs									
EPDs	BW	WW	YW	M	TM	CWT	REA	FAT	LY	MARB
	1.7	32	67	21.6	37	-1	0.10	-0.08	0.27	0.02

34

Char-Mo Osborn 92U

MNS 92U MC320453 POLLED FEB. 22/08

MXS Algonquan 506R LT Rio Blanco 1234 P
 PMC299205 MXS Lowntree 1K

Char-Mo Lois 44R CSS Sir Clear Cut 14N
 FC349083 Char-Mo Irene 59M

BW 107 lbs	205 DW 745 lbs									
EPDs	BW	WW	YW	M	TM	CWT	REA	FAT	LY	MARB
	4.6	46	98	19.1	42	16	0.21	0.60	-0.22	0.07

One year, a husband decided to buy his mother-in-law a cemetery plot as a Christmas gift.

The next year, he didn't buy her a gift.

When she asked him why, he replied, "Well, you still haven't used the gift I bought you last year!"

And that's how the fight started....

.....

I took my wife to a restaurant. The waiter, for some reason, took my order first.

"I'll have the strip steak, medium rare, please."

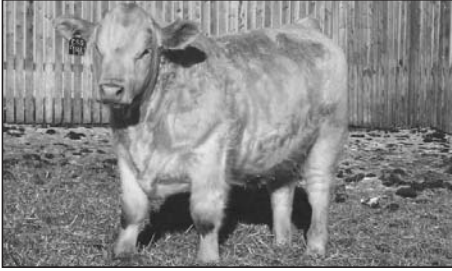
He said, "Aren't you worried about the mad cow?"

"Nah, she can order for herself."

And that's when the fight started....

Delivery will be available to central points. Due to the high cost of fuel there will be a \$50.00 charge per bull, payable sale day, if we deliver your bull. If you take your bull the day of the sale we will take \$50.00 off per trailer.

YEARLINGS



CSS Sir Gridmaker 94U

35

CSS Sir Gridmaker 94U

CSS 94U MC322294 POLLED FEB. 22/08

KAYR Grid Grid Iron 400S M6 Grid Maker 104 PET
 PMC304093 KAYR Miss 400P

CSS Lady Joe 15M Gerrard Joe Rockhead 43K
 FC315081 CSS Lady Stockman 83G

BW 112 lbs	205 DW 789 lbs									
EPDs	BW	WW	YW	M	TM	CWT	REA	FAT	LY	MARB
	2.3	39	75	26.0	46	7	0.05	0.06	-0.05	-0.04

36

CSS Sir Gridmaker 97U

CSS 97U MC322295 POLLED FEB. 23/08

KAYR Grid Grid Iron 400S M6 Grid Maker 104 PET
 PMC304093 KAYR Miss 400P

CSS Lady Uncertain 96K KCM Buckeye 819H
 PFC292585 CSS Lady White Marble 5G

BW 102 lbs	205 DW 701 lbs									
EPDs	BW	WW	YW	M	TM	CWT	REA	FAT	LY	MARB
	2.3	33	67	23.4	40	-1	0.00	-0.13	0.14	-0.01



CSS Sir Gridmaker 98U

37

CSS Sir Gridmaker 98U

CSS 98U MC322296 POLLED FEB. 23/08

KAYR Grid Grid Iron 400S M6 Grid Maker 104 PET
 PMC304093 KAYR Miss 400P

CSS Lady Blazer 52M HFCC PLD Blazer 44K
 FC315125 CSS Lady Stockman 62J

BW 103 lbs	205 DW 808 lbs									
EPDs	BW	WW	YW	M	TM	CWT	REA	FAT	LY	MARB
	1.8	46	88	22.6	45	12	0.09	0.33	-0.25	0.00

YEARLINGS

38

CSS Sir Navigator 100U

CSS 100U MC320648 HORNED FEB. 24/08

PCC Navigator 403P MVX Cougarhill Hank 720G
MC289502 Prairie Cove Miss 802H

CSS Lady Stockman 63K HTA Stockman PLD 534E
PFC286824 Prairie Cove Miss 115A

BW 96 lbs	205 DW 676 lbs									
EPDs	BW	WW	YW	M	TM	CWT	REA	FAT	LY	MARB
	1.7	29	59	22.2	37	-4	0.06	-0.24	0.36	-0.01

39

CSS Sir Algonquan 102U

CSS 102U MC320674 POLLED FEB. 27/08

MXS Algonquan 506R LT Rio Blanco 1234 P
PMC299205 MXS Lowntree 1K

CSS Lady Century 11N SVY Century PLD 107L
PFC332131 CSS Lady Cyndia 3G

BW 112 lbs	205 DW 649 lbs									
EPDs	BW	WW	YW	M	TM	CWT	REA	FAT	LY	MARB
	4.1	44	88	17.2	39	9	0.10	0.34	-0.13	0.06

40

CSS Sir Navigator 103U

CSS 103U MC320663 POLLED FEB. 27/08

PCC Navigator 403P MVX Cougarhill Hank 720G
MC289502 Prairie Cove Miss 802H

CSS Lady Erixon Bronson 56L Erixon's Bronson 208H
PFC301723 CSS Red Ruby 36J

BW 110 lbs	205 DW 721 lbs									
EPDs	BW	WW	YW	M	TM	CWT	REA	FAT	LY	MARB
	4.3	41	85	24.2	45	9	0.22	-0.05	0.31	0.02

41

CSS Sir Lux 105U

CSS 105U MC323031 POLLED FEB. 29/08

Bar K Lux 24N KAYR Tex 26L
MC281798 Bar K Breathless 10L

Bar K Classique 512R KAYR Tex 26L
PFC348885 HFCC Sara 10M

BW 84 lbs	205 DW 617 lbs									
EPDs	BW	WW	YW	M	TM	CWT	REA	FAT	LY	MARB
	1.6	39	74	16.6	36	6	0.06	0.16	-0.08	0.02





CSS Sir Gridmaker 107U

42

CSS Sir Gridmaker 107U

CSS 107U MC322300 POLLED FEB. 29/08

KAYR Grid Grid Iron 400S M6 Grid Maker 104 PET
 PMC304093 KAYR Miss 400P

CSS Lady Stockman 100K HTA Stockman PLD 534E
 FC286823 SLB Little Lake 14Z

BW 102 lbs	205 DW 863 lbs									
EPDs	BW	WW	YW	M	TM	CWT	REA	FAT	LY	MARB
	1.1	44	84	24.5	46	10	0.08	0.27	-0.19	-0.04

43

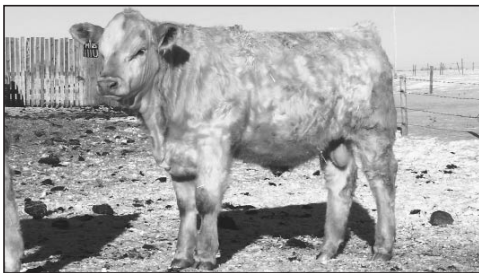
CSS Sir Gridmaker 110U

CSS 110U MC322298 POLLED MAR. 2/08

KAYR Grid Grid Iron 400S M6 Grid Maker 104 PET
 PMC304093 KAYR Miss 400P

CSS Lady Stockman 55L HTA Stockman PLD 534E
 PFC301659 SLB Little Lake 14Y

BW 108 lbs	205 DW 787 lbs									
EPDs	BW	WW	YW	M	TM	CWT	REA	FAT	LY	MARB
	2.6	41	81	23.9	45	7	0.09	-0.05	0.11	-0.04



Char-Mo Otto 111U

44

Char-Mo Otto 111U

MNS 111U MC320451 HORNED MAR. 3/08

PCC Navigator 403P MVX Cougarhill Hank 720G
 MC289502 Prairie Cove Miss 802H

Char-Mo Heavenly 54L WCR Prime Cut 764 PLD
 SFC302292 Pristine Chardonny 801H

BW 104 lbs	205 DW 744 lbs									
EPDs	BW	WW	YW	M	TM	CWT	REA	FAT	LY	MARB
	1.1	34	73	24.5	42	3	0.06	0.15	0.03	0.02

YEARLINGS

45

CSS Navigator 114U

CSS 114U MC320675 HORNED MAR. 6/08

PCC Navigator 403P MVX Cougarhill Hank 720G
MC289502 Prairie Cove Miss 802H

CSS B Double A 40N HTA Stockman PLD 534E
PFC327221 B Double A 59E

BW 104 lbs	205 DW 733 lbs									
EPDs	BW	WW	YW	M	TM	CWT	REA	FAT	LY	MARB
	1.8	33	67	25.4	42	1	0.11	-0.24	0.39	-0.01

46

CSS Sir Navigator 125U

CSS 125U MC320672 HORNED MAR. 12/08

PCC Navigator 403P MVX Cougarhill Hank 720G
MC289502 Prairie Cove Miss 802H

CSS Lady Blazer 127M HFCC PLD Blazer 44K
FC315080 CSS Lady Stockman 72G

BW 106 lbs	205 DW 680 lbs									
EPDs	BW	WW	YW	M	TM	CWT	REA	FAT	LY	MARB
	3.9	38	76	21.0	40	5	0.13	-0.17	0.30	0.02



CSS Sir Gridmaker 126U

47

CSS Sir Gridmaker 126U

CSS 126U MC322297 POLLED MAR. 12/08

KAYR Grid Grid Iron 400S M6 Grid Maker 104 PET
PMC304093 KAYR Miss 400P

CSS Lady Red Jazz 56R Char-Mo Jazz 31N
QPFC348744 CSS Lady Stockman 32L

BW 87 lbs	205 DW 721 lbs									
EPDs	BW	WW	YW	M	TM	CWT	REA	FAT	LY	MARB
	-0.7	34	76	27.9	45	5	0.06	0.38	-0.21	0.02

48

CSS Sir Algonquan 133U

CSS 133U MC320640 POLLED MAR. 15/08

MXS Algonquan 506R LT Rio Blanco 1234 P
PMC299205 MXS Lowntree 1K

CSS Lady Stockman One 28H HTA Stockman PLD 534E
FC258202 Prairewind Sheree 17Y

BW 102 lbs	205 DW 748 lbs									
EPDs	BW	WW	YW	M	TM	CWT	REA	FAT	LY	MARB
	2.9	40	87	20.5	40	8	0.17	0.49	-0.11	0.03

49

CSS Sir Clearcut 136U

CSS 136U MC320694 POLLED MAR. 19/08

CSS Sir Clear Cut 14N DYV Clearcut 14H
 PMC279930 Merit Addie 5078E

CSS Lady Fantom 113S HTA Fathom 470P
 PFC353715 CSS Lady Stockman 22M

BW 98 lbs	205 DW 830 lbs									
EPDs	BW	WW	YW	M	TM	CWT	REA	FAT	LY	MARB
	2.5	47	92	23.1	47	14	0.11	0.33	-0.22	0.02

50

CSS Sir Navigator 141U

CSS 141U MC320656 POLLED MAR. 22/08

PCC Navigator 403P MVX Cougarhill 720G
 MC289502 Prairie Cove Miss 802H

CSS Lady Erixon Bronson 8L Erixon's Bronson 208H
 PFC301722 CSS Lady Stockman 33J

BW 108 lbs	205 DW 793 lbs									
EPDs	BW	WW	YW	M	TM	CWT	REA	FAT	LY	MARB
	4.1	44	87	23.5	46	12	0.19	0.01	0.16	0.02

51

CSS Sir Clearcut 146U

CSS 146U MC320692 POLLED MAR. 28/08

CSS Sir Clear Cut 14N DYV Clearcut 14H
 PMC279930 Merit Addie 5078E

CSS Lady Navigator 42S PCC Navigator 403P
 PFC343709 CSS Lady Stockman 52L

BW 102 lbs	205 DW 695 lbs									
EPDs	BW	WW	YW	M	TM	CWT	REA	FAT	LY	MARB
	3.4	35	75	22.6	40	5	0.08	-0.06	0.14	0.02

52

CSS Sir Algonquan 147U

CSS 147U MC320669 POLLED MAR. 29/08

MXS Algonquan 506R LT Rio Blanco 1234 P
 PMC299205 MXS Lowntree 1K

CSS B Double A 90M CSS Shadow 61J
 PFC315061 B Double A 21E

BW 95 lbs	205 DW 755 lbs									
EPDs	BW	WW	YW	M	TM	CWT	REA	FAT	LY	MARB
	0.4	42	85	16.5	37	6	0.12	0.83	-0.42	0.06

We welcome you to visit our website at www.csscharolais.ca. If you can't be there in person, feel free to use our telephone bidding service or use one of us to select your herdsire for you. We have helped several buyers in the past to purchase their bulls when they can't be here. Who better than us will know our bulls. Tell us what you are looking for in a herdsire and we will select the right bull for your operation.

YEARLINGS



CSS Sir Navigator 148U

53

CSS Sir Navigator 148U

CSS 148U MC320673 POLLED MAR. 29/08

PCC Navigator 403P MVX Cougarhill Hank 720G
MC289502 Prairie Cove Miss 802H

CSS Lady First Wind 1N CSS First Wind 1L
QPFC330664 CSS Lady Erixon Bronson 69L

BW 93 lbs	205 DW 704 lbs									
EPDs	BW	WW	YW	M	TM	CWT	REA	FAT	LY	MARB
	1.4	35	70	21.4	39	-1	0.07	0.15	0.04	0.03



CSS Sir Navigator 149U

54

CSS Sir Navigator 149U

CSS 149U MC320658 POLLED APR. 3/08

PCC Navigator 403P MVX Cougarhill Hank 720G
MC289502 Prairie Cove Miss 802H

CSS Lady Bronson 45L EC Bronson 204 Polled
PFC310704 CSS Lady Sky 48H

BW 100 lbs	205 DW 932 lbs									
EPDs	BW	WW	YW	M	TM	CWT	REA	FAT	LY	MARB
	2.7	45	88	31.0	54	16	0.15	0.49	-0.31	0.03

55

CSS Sir Algonquan 150U

CSS 150U MC320655 POLLED APR. 7/08

MXS Algonquan 506R LT Rio Blanco 1234 P
PMC299205 MXS Lowntree 1K

CSS Lady Stockman 3L HTA Stockman PLD 534E
PFC301661 SLB Little Lake 11Z

BW 102 lbs	205 DW 971 lbs									
EPDs	BW	WW	YW	M	TM	CWT	REA	FAT	LY	MARB
	3.9	58	110	19.9	49	25	0.25	0.93	-0.54	0.02