



Uppin' The Ante



Charolais Female Sale

GOLD-BAR LIVESTOCK + GUELPH, ON
SEPTEMBER 27, 2008 + 2:00 P.M.



SALE INFO

Location:

GOLD BAR LIVESTOCK

R.R.#1, 7234 County Road 30, Ariss, ON

Sale Headquarters:

Comfort Inn, Guelph. Located minutes from sale location. • A block of rooms has been booked under Uppin' The Ante/ Andemar Sale. Room cost is \$89.00; the block of rooms is being held until September 8th so please book early.

To reserve call: 519-763-1900

or toll free 1-800-4 CHOICE

Sale Staff:

Auctioneer

Brent Walker – 519-223-0365

Block and Sale Consultant

Tim Bullick – 403-350-9858

Ringman

Helge By – 306-536-4261 (cell)

Bill McConnell – 705-689-0176 (home) 705-238-0739 (cell)

Dave Hasson – 519-546-4145

Craig Scott – 403-651-9441 (cell)

Trucking

H.S. Knill Company Ltd. – Toll free 1-877-442-3106

Bruce Stewart Transport – 204-773-3357 or 204-773-6695

• Loading – Cattle cannot be loaded until the completion of the Andemar Sale.

Sale Day Phones

Tim Bullick – 403-350-9858 • Brent Saunders – 519-372-6196 • Gold Bar – 519-824-4354

Insurance

Mellow Insurance, Murray Mellow – 905-857-1669

• All animals become the responsibility of the buyer at the time of sale

Junior Incentives Program:

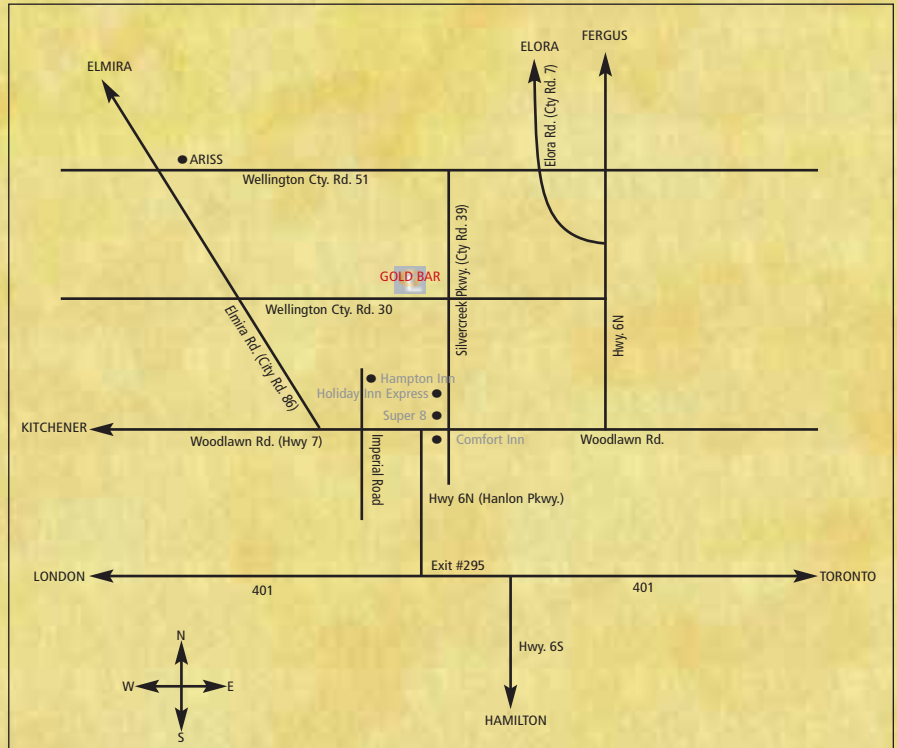
Cash incentive program for a project animal purchased from the Uppin the Ante Female Sale

- \$500- to the Grand Champion at the CCYA National Junior Show (Peterborough)
- \$500- to the Supreme Champion at the Canadian Junior Beef Show (Royal Winter Fair)
- \$500- to the Supreme Champion at the Top Meadow National Junior Show (NABC)
- \$250- to the Reserve Grand Champion at the CCYA National Junior Show (Peterborough)
- \$250- to the overall Grand Champion at the Junior Exhibitors Regional 4-H Show
- \$100- for the completion of the 4-H project.

Schedule of Events:

- **Thursday, September 25th – Blue Jays vs. Yankees at the Rogers Centre. Call any consignor for details.**
- **Friday, September 26th – All Day viewing with refreshments during the evening.**
- **Saturday, September 27th – viewing of sale cattle**
11:00 a.m. – Lunch and refreshments
2:00 p.m. – Uppin the Ante Female Sale • 3:30 p.m. – Andemar Sharing the Excitement Sale

Terms & Conditions: This sale will be conducted under the terms and conditions of the Canadian Charolais Assoc.



WELCOME

On behalf of the entire Uppin' The Ante Group, I would like to welcome you to our third annual sale. We are pleased to welcome Chester and Michael Tupling along with their spouses Karla and Shannon into the group this year. Rollin Acres Charolais has been very active in the breed for many years and will bring a different genetic twist to the sale this year with some Full French genetics.

The sale location has changed this year, it will be held at Gold-Bar Livestock just outside of Guelph. Brad and Sarah Buchanan have an excellent facility and the group is looking forward to working with them.

The breeders in the Uppin' The Ante group are committed to bringing only their best to this sale. Each year the sale offering gets deeper in quality and consistency. Quality seedstock will always be a wise investment.

The Uppin' The Ante Group along with Andemar's "Share the Excitement Sale" are organizing a bus trip to see the Blue Jays play the Yankees on Thursday evening, the 25th of July. If you are interested please contact any of the group members ASAP as ticket numbers and bus seating is limited.

The sale cattle will be available for viewing beginning on Friday evening, refreshments will be served.

Please don't hesitate to contact myself or any of the group members if we can be of service to you.

Brent Saunders
Sale Chairman 2008

PROVEN PAIRS

1

CHARDEL TASSEL 211M

PFC319706 HEY 211M 23 January 2002 Polled

BW	WW	YW	M	TM
0.0	23	47	9.9	21.4

WCR SIR FA MAC 2244
JWK IMPRESSIVE D040 ET(P)
HBR LADY LIZ 721 POLLED
WCR PRIME CUT 764 PLD
SKYMONT EASE 2078(P)
WCR MISS EASE 4314
WCR MISS DUKE 9947
FVC TANGO 907Y
CHARDEL HARVEST 438D
CHARDEL EVANGELINE 822X
CHARDEL TASSEL 5K(P)
HTA NORTHERN LIGHT 357C(P)
CHARDEL TASSEL 650F(P)
CHARDEL LADY HIGHGEAR27

Here is a complete package of 5 in total. This cow was purchased at the Chardel Dispersal in Dec. 04. She has left us some great offspring, here is your chance to get in on some. She has a KCM Rio Chico 429S heifer calf at side. She is bred to calve early in the new year.

Bred April 5, 2008 to RGP Eureka. Checked safe to that service. Consigned by: Bridor Charolais.



1A BRIDOR UPPITY 17U

PFC366697 BMA 17U 17 January 2008 Polled

Sired by KCM RIO CHICO 429P (P)
A great structured heifer with natural thickness and smooth polled. She should make a great 4-H project. Consigned by: Bridor Charolais.

BW	WW	YW	M	TM
2.5	32	65	8.3	21.4

WCR PRIME CUT 764 PLD
LT RIO BLANCO 1234 P(P)
LT PRAIRIE MAID 4054
KCM RIO CHICO 429P(P)
LT WYOMING WIND 4020 PLD
KCM VENUS 208M(P)
RPJ VENUS 27J(P)
JWK IMPRESSIVE D040 ET(P)
WCR PRIME CUT 764 PLD
WCR MISS EASE 4314
CHARDEL TASSEL 211M(P)
CHARDEL HARVEST 438D
CHARDEL TASSEL 5K(P)
CHARDEL TASSEL 650F(P)

PROVEN PAIRS

2

PRAIRIE COVE MISS 460P

PFC337629 PCC 460P10 February 2004 Polled

LT WYOMING WIND 4020 PLD
SPARROWS ALLIANCE 513G(P)
CHARDEL PARADISE 513E(P)
HFCC PLD BOND 19L(P)
LT UNLIMITED CHAPS 0109(P)
HFCC ELVIRA 36C(P)
HFCC MELISSA 27A
SVC FUTURIST 809X
PCC NAUTILUS 925J
PRAIRIE COVE MISS 406D
PRAIRIE COVE MISS 177L
JCR RIMROCK 523Y
LS MISS MAY 118A(P)
BW CHANDELIER 48X



BW	WW	YW	M	TM
.6	14	25	-.6	7

They tell us they want the best for this sale of ours so here is our contribution. Straight out of the legendary Prairie Cove Charolais dispersal sale, this young cow was one of the feature heifer calves and has been a firm producer in our herd for three years. Her sire, Bond, needs no introduction to the industry. High milking ability with sheer eye appeal even at 4 years of age makes this female one to take a closer look at.

Exposed to ACC Pale Rider 601S April 16-June 7. Exposed to WKL Mr Big Shot 202 June 21-July 21
Consigned by: Langstaff Charolais.

2A

WKL 407U 7 April 2008

This promising young heifer calf is the first her dam has produced and it is almost painful to have to part with her. Her sire was a strong herd bull out of the Full-French bull, Encore. She has a ton of potential and is already beginning to show many strong features this early in the game. She lacks none of her dam's eye appeal and has the power that was easily visible in her sire.

Consigned by: Langstaff Charolais.

BW	WW	YW	M	TM
1	16	27	-2.9	5

AIGLON
ENCORE (FF)
BALSAMINE
WKL STUD MUFFIN 105S
JSR HARVEST 36H
DEPAUL MARIBEL 83M
DEPAUL DYNASTY 24D
SPARROWS ALLIANCE 513G(P)
HFCC PLD BOND 19L(P)
HFCC ELVIRA 36C(P)
PRAIRIE COVE MISS 460P(P)
PCC NAUTILUS 925J
PRAIRIE COVE MISS 177L
LS MISS MAY 118A(P)

3

JSR GOLDY LASS 48S

PFC356503 JSR 48S 22 January 2006 Polled

SPARROWS ALLIANCE 513G(P)
HFCC PLD EVOLUTION 5L(P)
HFCC ELVIRA 916J(P)
SVY FREEDOM PLD 307N(P)
RA BIG CAT 9017 PLD(P)
SVY PURRFECT 184L(P)
SVY JUSTLIKEPERFECT 432D
LHD MR PERFECT Y416(P)
LHD CIGAR E46(P)
LHD MS CLASSIC BELL X613
JSR GOLDY LASS 52P(P)
P-3 MONTE LAD 0-32Z(P)
NOR GOLDY LASS 29F(P)
NOR GOLDEN GIRL 18A



BW	WW	YW	M	TM
2.1	16	30	12.1	20

This moderate framed Freedom daughter has done a great job on her first calf. She is sound in every way and should be a great producer for years to come.

Bred Winn Man's Pistol 615S on April 26, exposed to JSR Trump 7N May 10 - June 22
Consigned by: Saunders Charolais.



ECC No Doubt 2022P
Sire of Lot 3A

3A JSR GOLDY LASS 16U

PFC366162 JSR 16U January 2008 Polled

An attractive No Doubt daughter that is feminine in her design with tons of length and thickness.

Consigned by: Saunders Charolais.

BW	WW	YW	M	TM
1.3	26	52	13.6	27

WCR SIR TRADITION 066
M6 GRID MAKER 104 PET(P)
VCR MISS MAC IV 317
EC NO DOUBT 2022P
VCR SIR DUKE 914 PLD(P)
EC LADY DUKE 2022P
JES MS ADVANTAGE C74
HFCC PLD EVOLUTION 5L(P)
SVY FREEDOM PLD 307N(P)
SVY PURRFECT 184L(P)
JSR GOLDY LASS 48S(P)
LHD CIGAR E46(P)
JSR GOLDY LASS 52P(P)
NOR GOLDY LASS 29F(P)

EXPERIENCED LADIES

4

JSR KRYSTAL 69M

PFC314255 JSR 69M 11 February 2002 Polled

BW	WW	YW	M	TM
3.5	21	45	6.7	17

TOWERVIEW EXCEL 3P(P)
 KJP SKY FIRE 51T(P)
 JOHNSON'S MISS 1M
 HTA WHITEHOT 105A(P)
 ROXY'S JACK DEMPSEY 63R
 SPARROWS PRISCILLA 8735W(P)
 MISS WBS SPARJAG 35K(S)
 SCHURRTOP 5627
 LT WYOMING WIND 4020 PLD(P)
 LT CHAP'S LADY 2170P
 NOR KRYSTAL 10K(P)
 SIL CR HIGH ROLLER 34X(P)
 NOR KRYSTAL 32B(P)
 MS SILVERLAIS 14R(P)

White Hot daughters this young are hard to find, and even harder to part with. She has been a consistent producer for us. Her Freedom bull calf at side this year will likely have our highest WPDA at weaning.

Bred April 5th to SVY Freedom, exposed to JSR Sensation 22S April 26 - May 10.

Consigned by: Saunders Charolais.



5

WSS NORMAL 315N

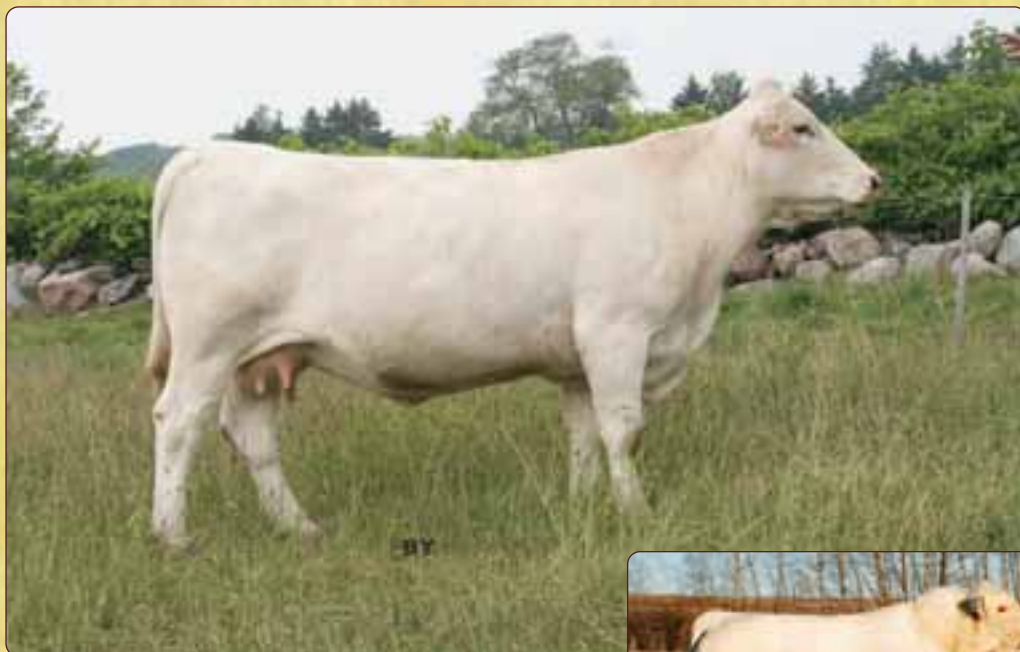
PFC328661 WSS 315N 14 January 2003 Polled

BW	WW	YW	M	TM
4.8	20	27	-2.4	8

KJP SKY FIRE 51T(P)
 RPJ EVEREADY 403D(S)
 RPJ POLLED BEAUTY 210B(P)
 SLY EASTWOOD PLD 32F(P)
 CHARDEL REEBOK 10Y
 VMN IMA CUTIE TOO 324C
 VMN MINT JULEP 918Y
 WILDOR RAVEN 6M
 SVC FUTURIST 809X
 LCC MISS HANNA 7R
 PRAIRIE COVE MISS 132L(P)
 MNE BANJO 70B(P)
 PRAIRIE COVE MISS 703G(P)
 MNE EXQUISITE 1E(P)

WSS Normal 315N is a smooth polled Eastwood daughter out of a Futurist cow. She has produced four Freedom offspring and is bred back to Freedom again. A daughter was a high selling heifer calf in the first Uppin' the Ante sale to Kay-R Charolais and another daughter was a high selling heifer calf in last year's Uppin' the Ante sale to SanDan and New Country.

Bred: Apr.13/08 to SVY Freedom
 Consigned by: Whiskey Hollow & Medonte Charolais.



SVY Freedom Polled 307N
 Sire & Service Sire of many in the sale

EXPERIENCED LADIES

6 MEDONTE NADIA 7N

PFC324550 XAL 7N12 February 2003 Polled

BW	WW	YW	M	TM
-0.1	15	19	-5.4	2

SLY EASTWOOD PLD 32F(P)
 KC STOLICHNAYA H016 ET(P)
 WCR MISS EASE 5177
 XAL LETTERHEAD 9L(P)
 SVC FUTURIST 809X
 PRAIRIE COVE MISS 570E
 BLIND CREEK MS SHERRY 3A
 RPJ EVEREADY 403D(S)
 SLY EASTWOOD PLD 32F(P)
 VMN IMA CUTIE TOO 324C
 SNAKE CREEK'S KITKAT103K(P)
 KEYS POLLED COMPASS(P)
 DVY GARBO 733G(P)
 DVY UBETCHYA CAN 78A

Medonte Nadia 7N is a polled Letterhead daughter out of an Eastwood cow. Letterhead, the 2003 Royal Reserve Champion Bull was used as a cleanup bull until he went to Gerald Henry, Owen Sound. Nadia is an easy fleshing female with a great disposition. She has an excellent Freedom bull calf at her side this year and is bred back to Freedom again.

Bred: May 4/08 to SVY Freedom.
 Consigned by: Whiskey Hollow & Medonte Charolais.



7 BLACKBERN PICKLES 1P

PFC335174 KBF 1P 1 January 2004 Polled

BW	WW	YW	M	TM
1.3	19	36	1.7	11

WCR SIR FA MAC 2244
 JWK IMPRESSIVE D040 ET(P)
 HBR LADY LIZ 721 POLLED
 WCR PRIME CUT 764 PLD
 SKYMONT EASE 2078(P)
 F704053 WCR MISS EASE 4314
 WCR MISS DUKE 9947
 JBJ A J 787G(P)
 PMC243941 HICKS KAPITAL 4K(P)
 HICKS MS YAZIMAN 704G(P)
 BLACKBERN MELODY 4M(P)
 WAT-CHA ZASPERRATED 4Z(P)
 WAT-CHA BEST KEPT 23B(P)
 LMK ANNIE OAKLY 72R

There are some cows that just go to work every year without any fuss and Pickles is one of those ladies. She has given us bull calves that weighed off in the top 5% of the herd every year. It's hard to let the good ones go, but we trust that you'll be pleased with what you see.

Bred March 21, 2008 to Wyoming Wind, exposed to Bar EW Rebel.
 Consigned by: Blackburn Farm.



Wyoming Wind
 Service Sire of Lot 7

EXPERIENCED LADIES

8

JSR VICTORIA 19R

PFC343819 JSR 19R 6 January 2005 Polled

BW	WW	YW	M	TM
3.6	19	29	9.6	19

SPARROWS ALLIANCE 513G(P)
 HFCC PLD EVOLUTION 5L(P)
 HFCC ELVIRA 916J(P)
 SVY FREEDOM PLD 307N(P)
 RA BIG CAT 9017 PLD(P)
 SVY PURRFECT 184L(P)
 SVY JUSTLIKEPERFECT 432D
 SLY EASTWOOD PLD 32F(P)
 KC STOLICHNAYA H016 ET(P)
 WCR MISS EASE 5177
 NOR VICTORIA 31K(P)
 HTA WHITEHOT 105A(P)
 NOR VICTORIA 6G
 NOR VICTORIA 9E(P)

The Freedom daughters just keep getting better with age. Her first calf was a sought after bull in our sale this spring selling to Gordon Boyd and Bob Willan. She has a big, thick rugged bull calf at side this year sired by Pistol 615S and is bred back the same way.

Bred Winn Man's Pistol 615S on March 28, exposed to him April 26 - July 8.

Consigned by: Saunders Charolais.



Winn Man's Pistol 615S
 Service Sire of Lot 8

9

MNE ROBIN 46R

PFC354773 MNE 46R 26 January 2005 Polled

BW	WW	YW	M	TM
4.6	22	41	-0.7	11

LT WYOMING WIND 4020 PLD
 SPARROWS ALLIANCE 513G(P)
 CHARDEL PARADISE 513E(P)
 SPARROWS COSSACK 11L(P)
 JSC TRANSALTA 121Y
 HVR DANA 11D
 HVR DANA 24A
 CHARDEL FALCON 503T
 MNE GOLDEN EAGLE 25W(P)
 EFH MISS T 10S(P)
 BKE POLLY'S EAGLE 6F(P)
 11TH HOUR PREMIUM 809K(P)
 MNE MISS POLLYANNA 8P(P)
 MNEMISS SILVER BACCHUS8L

This is a great young cow plucked right out of our front pasture. Her first calf sold in last year's Uppin' the Ante Sale to Loewen Charolais. 46R bred right back and is doing a good job on a bull calf this year. She sells bred to ACC Hercules, the reigning Canadian National Champ who was undefeated as a calf, yearling and two-year-old. We are thrilled to be part owners in Hercules with Andemar Cattle Co. Exposed to ACC Hercules April 1 - July 1

Consigned by: Whiskey Hollow Cattle Company.



EXPERIENCED LADIES

10

WKL REDNECK WOMAN 205R

PFC344225 WKL 205R 5 February 2005 Polled

BW	WW	YW	M	TM
1.8	25	40	5.6	18

E-CEE KATMANDU 200B(P)
 RGP EUREKA 17E(P)
 AGV MASTERLADY 17Y(P)
 DEPAUL LEADER 4L(P)
 THOMAS THUNDERSTRUCK 4603P
 DEPAUL GRACE 47G(P)
 MKC MISS STELLA 41A(P)
 LT UNLIMITED EASE 9108(P)
 BALDRIDGE FASTTRACK 82F(P)
 BALDRIDGE SWEETHEART 53D
 WLM MACKS MILKYWAY 5M(P)
 NZL POLLED RAVEN 165Y(P)
 WLM MACKS KIT KAT 10K(P)
 MISS CORCAIR 25W

This well-made and easy keeping three-year-old will make a nice addition to any cowherd. Showed extensively in her earlier years, she never failed to hold her own in the ring. If you need some meaty, bull producing power, look no further folks.

Bred AI to Crystal D Pierce 40P April 2, exposed to PCC Easton April 17-July 21.

Consigned by: Langstaff Charolais.



11

JSR KATIE 62R

FC351524 JSR 62R 6 February 2005

BW	WW	YW	M	TM
3.3	18	31	9.8	19

DYV CLEARCUT 14H(P)
 SVY WIDE CUT 20K
 VMN DELILAH 615F
 JSR EQUITY 17M(P)
 JWK IMPRESSIVE D040 ET(P)
 JSR JASMINE 40J(P)
 DLS SPECIAL LADY 40G
 SLY EASTWOOD PLD 32F(P)
 SVY BEDROCK PLD 816H
 VMN FAME IS THE NAME634F
 JSR KATIE 27K
 NASHVILLE GOLDSTAR 12U
 BCJ MISS STAR BARNES 11X
 MISS BARNES UNA 9U

62R produced one of the stoutest bulls in our sale this spring and she has another top end bull calf this year. She has tons of volume with a great udder and a big sound foot under her. This female is just entering her prime production years and would be an asset to any herd.

Bred SVY Freedom Pld 307N on April 10th, exposed to JSR Sensation 225 May 10-July 8.

Consigned by: Saunders Charolais.



EXPERIENCED LADIES

12

WKL ROSALYND 308R

PFC344223 WKL 308R 8 March 2005 Polled

BW	WW	YW	M	TM
3.8	24	44	4.3	16

E-CEE KATMANDU 200B(P)
 RGP EUREKA 17E(P)
 AGV MASTERLADY 17Y(P)
 DEPAUL LEADER 4L(P)
 THOMAS THUNDERSTRUCK 4603P
 DEPAUL GRACE 47G(P)
 MKC MISS STELLA 41A(P)
 HTA WHITEHOT 105A(P)
 JSR HARVEST 36H(P)
 SBJ SPLASH 4C
 DEPAUL KAROL 31K(P)
 THE HHP MONTE CARLO 1ST(P)
 BURG MISS MANDY 159Z(P)
 WBC MISS EMPRESS 441S(P)

A really nice daughter out of DePaul Leader who was a strong herd bull for many years here at Langstaff Charolais and he was around those years for a reason. A strong milking female who we hate to part with, but we are determined to keep the quality of cattle high in our sale. Exposed to PCC Easton April 17-July 21.

Consigned by: Langstaff Charolais.



BRED HEIFERS

13

BLACKBERN TERRI 3T

PFC358299 KBF 3T 1 January 2007 Polled

BW	WW	YW	M	TM
2.1	27	51	7.3	21

WCR SIR TRADITION 066
 M6 GRID MAKER 104 PET(P)
 VCR MISS MAC IV 317
 EC NO DOUBT 2022P(P)
 VCR SIR DUKE 914 PLD
 EC LADY DUKE 2022P
 JES MS ADVANTAGE C74
 SPARROWS ALLIANCE 513G(P)
 HFCC PLD BOND 19L(P)
 HFCC ELVIRA 36C(P)
 BLACKBERN RAMONA 31R
 PCC POWER TREND 503E
 RIC SUE 172H
 RIC SUE 138E

We love the No Doubt calves and we have no doubt that you'll love this one, too! Terri has eye appeal and performance all wrapped up in one neat package. Just imagine the unlimited potential next spring with the genetics of Bond, No Doubt and Bluegrass in her first calf. Don't pass this one over.

Bred March 26, 2008 to LT Bluegrass.

Consigned by: Blackburn Farm.



BRED HEIFERS

14 BRIDOR THEA 5T

FC358722 BMA 5T 3 January 2007

BW	WW	YW	M	TM
4.3	32	65	8.3	24

WCR PRIME CUT 764 PLD
 LT RIO BLANCO 1234 P(P)
 LT PRAIRIE MAID 4054
 KCM RIO CHICO 429P(P)
 LT WYOMING WIND 4020 PLD
 KCM VENUS 208M(P)
 RPJ VENUS 27J(P)
 JWK IMPRESSIVE D040 ET(P)
 WCR PRIME CUT 764 PLD
 WCR MISS EASE 4314
 CHARDEL TASSEL 211M(P)
 CHARDEL HARVEST 438D
 CHARDEL TASSEL 5K(P)
 CHARDEL TASSEL 650F(P)

Here is a KCM Rio Chico daughter that looks promising. We are pleased with the Chico daughters. She is bred to SOS Polled Detenator 8M to calve early. Daughter of Lot 1. Bred March 21, 2008. Checked safe. Consigned by: Bridor Charolais.



KCM Rio Chico 429P
Sire of Lot 14

15 JSR SILK TASSEL 11T

PFC358861 JSR 11T 4 January 2007 Polled

BW	WW	YW	M	TM
2.0	16	30	9.3	17

SPARROWS ALLIANCE 513G(P)
 HFCC PLD EVOLUTION 5L(P)
 HFCC ELVIRA 916J(P)
 SVY FREEDOM PLD 307N(P)
 RA BIG CAT 9017 PLD(P)
 SVY PURRFECT 184L(P)
 SVY JUSTLIKEPERFECT 432D
 SPARROWS ALLIANCE 513G(P)
 SPARROWS COSSACK 11L(P)
 HVR DANA 11D
 ACC SILK TASSEL 11R(P)
 HTA NORTHERN LIGHT 357C(P)
 CHARDEL TASSEL 932J(P)
 CHARDEL LADY HIGHGEAR 27Y

A stylish Freedom daughter out of a Cossack two-year-old that originated from the Andemar herd. The Freedom daughters are developing into awesome brood cows with superior udders. Bred April 19 to EC No Doubt. Consigned by: Saunders Charolais.



ACC Silk Tassel 11R
Dam of Lot 15

BRED HEIFERS

16 HIDDEN TRAIL TREASURE 6T

PFC358768 BRT 6T 4 January 2007 Polled

BW	WW	YW	M	TM
1.3	39	71	3.9	23

WCR PRIME CUT 764 PLD
 LT RIO BLANCO 1234 P(P)
 LT PRAIRIE MAID 4054
 BRT BRETT 5R(P)
 B&M BENJI'S LAD 23G(P)
 CORNERVIEW LIBERTY 24L(P)
 CORNERVIEW PHEBEE 13F(P)
 HTA NORTHERN LIGHT 357C(P)
 SNAKE TRAIL MACK 8K(P)
 STC MISS OUTLAW 605F
 BAR E W VICKIE 14R(P)
 SVY BEDROCK PLD 816H(P)
 BAR E W REBA 4M(P)
 BAR E W MISS STOLI 34K(P)

Treasure is a docile female with experience in the show ring. Shown at the side of her two-year-old dam, the pair went on to become the Ontario Overall Points Champion in their category.

Exposed to Sparrow's Coach 467S
 March 20th – June 20th, observed on March 24th.

Consigned by: Hidden Trail Charolais.



Sparrow's Coach 467S
 Service Sire to Lot 16, 21 & 22

17 JSR GEORGIA 15T

PFC358863 JSR 15T 6 January 2007 Polled

BW	WW	YW	M	TM
0.4	14	26	6.2	13

EATONS PERFORMER 6709
 EATONS PREDICTOR 9230
 EATONS MISS BIG SANDY
 LT WESTERN SPUR 2061 PLD(P)
 LT WYOMING WIND 4020 PLD
 LT MAIDEN'S BREEZE 8242P
 LT UNLIMITED MAIDEN 1131(P)
 HFCC PLD EVOLUTION 5L(P)
 SVY FREEDOM PLD 307N(P)
 SVY PURRFECT 184L(P)
 JSR GEORGIA 27R(P)
 KEYS POLLED COMPASS(P)
 ASD GEORGIA 1G(P)
 YRJ MISS CHERIE 4Z

A very complete Spur daughter with lots of potential. She sells bred to the Genex bull, EC No Doubt, who we have used on heifers with great results.

Bred EC No Doubt on April 16.

Consigned by: Saunder Charolais.



BRED HEIFERS

18 WHC TOO HOT TO HANDLE 6T

PFC358737 WHC 6T 10 January 2007 Polled

BW	WW	YW	M	TM
2.3	24	47	12.6	25

LHD MR PERFECT Y416(P)
 SOS POLLED DETONATOR 8M(P)
 P-3 LADY MONTE 0-80Z(P)
 MXS VERMILLION 527R(P)
 HTA WHITEHOT 105A(P)
 MXS ESPEON 122L
 MXS WYOMING TUNDRA 936J(P)
 HFCC PLD EVOLUTION 5L(P)
 SVY FREEDOM PLD 307N(P)
 SVY PURRFECT 184L(P)
 SDC VANILLA 34R(P)
 RPJ EVEREADY 403D(S)
 SDC MISS GYPSY 40J(P)
 SDC MISS GLORIA 69G(P)

Right off the top of our replacement pen, this heifer comes from one of the best and most profitable cow families in the breed. The Gypsy family has generated thousands for SanDan Charolais and 6T will make big dollars for her new owners.

Bred AI to LT Bluegrass on May 1, exposed to WHC Turbo Lover (Chardel Lady Luck x HFCC Evolution from May 16 - July1).

Consigned by: Whiskey Hollow Cattle Company.



19 BRIDOR TIFFANY 12T

PFC358720 BMA 12T 11 January 2007 Polled

BW	WW	YW	M	TM
3.9	33	67	4.1	21

WCR PRIME CUT 764 PLD
 LT RIO BLANCO 1234 P(P)
 LT PRAIRIE MAID 4054
 KCM RIO CHICO 429P(P)
 LT WYOMING WIND 4020 PLD
 KCM VENUS 208M(P)
 RPJ VENUS 27J(P)
 JWK IMPRESSIVE D040 ET(P)
 PF IMPRESSED 620 P ET(P)
 MISS KC CROCUS 904 POLLED
 BRIDOR MIA 71M(P)
 CCC ELEVATIONS KNOCKOUT
 AIT VERMUR CHAROLETTE 2C
 AIT VERMUR LCUY 3W

Here is another KCM RIO CHICO daughter that will make a brood cow in anyone's herd. Bred to SOS Polled Detenator 8M March 30, 2008. Checked safe.

Consigned by: Bridor Charolais.



SOS Polled Detenator 8M
 Service Sire to Lot 19

BRED HEIFERS

20 ACC LADY LUCK 716T

ACC 716T17 January 2007 Polled

BW	WW	YW	M	TM
3.4	24	30	-1.5	11

LT WYOMING WIND 4020 PLD
 SPARROWS ALLIANCE 513G(P)
 CHARDEL PARADISE 513E(P)
 HFCC PLD EVOLUTION 5L(P)
 HTA HARD COPY PLD 621F(P)
 HFCC ELVIRA 916J(P)
 HFCC ELVIRA 36C(P)
 FVC TANGO 907Y
 CHARDEL HARVEST 438D
 CHARDEL EVANGELINE 822X
 CHARDEL LADY LUCK 911J(P)
 LT RAMROD 4148(P)
 CHARDEL LADY LUCK 708G(P)
 CHARDEL LADY LUCK 257B

Bred April 11 to Sparrows Ransom, check safe.

This stylish ET daughter from her well known donor dam, Lady Luck 911J, is for sure going to be in her new owners herd a long time. There are two reasons for that. Firstly, she is going to produce awesome calves. Secondly, there is great longevity in this cow family. Help yourself to one of the really great females in the sale.

Consigned by: Andemar Cattle Co.



Chardel Lady Luck 911J
 Dam of Lot 20

21 CORNERVIEW TABITHA 11T

PFC358640 BCN 11T 13 January 2007 Polled

BW	WW	YW	M	TM
4.2	19	27	-2.2	7

SPARROWS ALLIANCE 513G(P)
 HFCC PLD BOND 19L(P)
 HFCC ELVIRA 36C(P)
 PCC PATRIOT 418P
 BKJ BUCKAROO 836H
 PRAIRIE COVE MISS 249M
 RIC MISS 89F(P)
 KEYS POLLED COMPASS(P)
 SVY FRANCHISE PLD 738G(P)
 LVY PILLOW TALK 904Y
 SNAKE CREEK KOOL 1032K(P)
 CHARDEL REEBOK 10Y
 FC174513 CHARDEL PARADISE 205B
 CHARDEL LADY HIGHGEAR 1W

Tabitha will catch your eye on sale day and will be one to watch down the road as she matures. A really promising young heifer with a solid pedigree to back up her fault-free phenotype. This is a good, honest female out of a proven cow that delivers a great calf year after year.

Exposed to Sparrow's Coach 467S March 20th – June 20th, observed on April 14th.

Consigned by: Cornerview Charolais.



BRED HEIFERS

22

CORNERVIEW TAMARA 15T

PFC358638 BCN 15T 25 January 2007 Polled

BW	WW	YW	M	TM
.4	7	14	4.3	8

SPARROWS ALLIANCE 513G(P)
 PMC256293 HFCC PLD BOND 19L(P)
 HFCC ELVIRA 36C(P)
 PCC PATRIOT 418P
 BKJ BUCKAROO 836H
 PRAIRIE COVE MISS 249M
 RIC MISS 89F(P)
 ARL BEN JI 41B(P)
 B&M BENJI'S LAD 23G(P)
 LEVI'S CONTESSA 22A
 CORNERVIEW MINETA 13M(P)
 LAND O'LAKES FOX FIRE19X(P)
 CORNERVIEW ANITA M 13A(P)
 NORLO'S MAGGY 1P(P)

Tamara is a strong polled, moderate framed heifer out of a hardworking cow family. Judging by the performance of the first crop of Sparrow's Coach calves, her mating to him is sure to produce a well-muscled, deep-bodied calf. Exposed to Sparrow's Coach 4675 March 20th – June 20th, observed on May 13th.

Consigned by: Cornerview Charolais.



23

WHC TATTOO YOU 12T

PFC358608 WHC 12T 29 January 2007 Polled

BW	WW	YW	M	TM
1.5	28	53	6.2	20

LT WYOMING WIND 4020 PLD
 SPARROWS ALLIANCE 513G(P)
 CHARDEL PARADISE 513E(P)
 SPARROWS ELDORADO 361L(P)
 LT RAMROD 4148(P)
 SPARROWS HEARTBREAK 261J(P)
 CHARDEL HEARTBREAK 261B
 RAINBOW MR CYRANO 32D
 MVX COUGARHILL HANK 720G
 MVX EDITH 806X
 PRAIRIE COVE MISS 503R
 BALDRIDGE FASTTRACK 82F(P)
 CIRCLE CEE RUMOUR 206M(P)
 CIRCLE CEE ALEX 9K(P)

This heifer has been a favourite since the day she was born and comes from an emerging cow family at Whiskey Hollow. I can't say enough about her Cougarhill Hank dam and Fasttrack grandma. If correct type, reliable pedigree and a sweetheart attitude are important to your operation, make sure you are the last bidder on 12T.

Bred AI to LT Bluegrass on May 1, exposed to WHC Turbo Lover (Chardel Lady Luck x HFCC Evolution) May 16-July 1

Consigned by: Whiskey Hollow Cattle Company.



BRED HEIFERS

24

ROLLIN' ACRES TOUCHSTONE 20T

FC367750 HDT 20T 2 February 2007

BW	WW	YW	M	TM
3.2	13	19	1.1	8

RAVISSANT
MONTAGNARD
FANFARE
ROLLIN ACRES TOP NOTCH9P (FF)
RAINBOW 7N MR 13S
PCFL OLIVIA 14J
PCFL FALLINA 117Z
GIN TONIC
PCFL NICHOLAS 69H (FF)
PCFL JASMINE 34D
ROLLIN ACRES LINDA 18L
RXE MR DREAMMAKER 20D
FC279976 ROLLIN ACRES JENEAN 68J
YRJ JACKSON SKYLITER 3F

Rollin' Acres Touchstone comes right out of our bred heifer pen. Her eye appeal and French influence as well as being bred to Agronome for an early January calf will be an asset to your cow herd.

Bred Agronome April 3.

Consigned by: Rollin' Acres Charolais.



25

JSR ALLIE 63T

PFC358877 JSR 63T 4 February 2007 Polled

BW	WW	YW	M	TM
3.7	20	32	6.9	17

SPARROWS ALLIANCE 513G(P)
HFCC PLD EVOLUTION 5L(P)
HFCC ELVIRA 916J(P)
SVY FREEDOM PLD 307N(P)
RA BIG CAT 9017 PLD(P)
SVY PURRFECT 184L(P)
SVY JUSTLIKEPERFECT 432D
LT WYOMING WIND 4020 PLD(P)
SPARROWS ALLIANCE 513G(P)
CHARDEL PARADISE 513E(P)
KCM ALLIE 325N(P)
JMB WL 20Z(P)
CSS LADY SKYFIRE 28B(P)
DWX MISS RAINBOW 7Y

The Freedom x Alliance mating has really worked for us. Her dam was purchased through a past Sterling Collection Sale from the Perrot Martin herd.

Bred EC No Doubt on April 17 and JSR Equity 17M on May 5.

Consigned by: Saunders Charolais.



KCM Allie 325M
Dam of Lot 25

BRED HEIFERS

26

BLACKBERN TORY 23T

PFC358296 KBF 23T 6 February 2007 Polled

BW	WW	YW	M	TM
.7	21	36	7.8	18

HTA NORTHERN LIGHT 357C(P)
 SNAKE TRAIL MACK 8K(P)
 STC MISS OUTLAW 605F
 BAR EW REBEL 28R(P)
 BAR EW PLD CASINO 637F(P)
 BAR E W DAISY 68K(P)
 BAR EW DESIRE 68F
 LT UNLIMITED EASE 9108(P)
 PLEASANT DAWN U WIN 2K(P)
 PLEASANT DAWN EVA 2H(P)
 BLACKBERN REGENT 14R(P)
 MNE EAGLE'S ECHO 12E(P)
 LOYDELA HUCKLEBERRY 29H(P)
 LOYDELA EXPRESS 7E(P)

Tory was shown in our two-year-old pair in 2007. We love her dam who is moderate framed and very easy doing. Tory is following in her footsteps. She would be a welcome addition in any herd with the added bonus of a No Doubt baby in the spring.

Bred March 26, 2008 to EC No Doubt 2022P.

Consigned by: Blackburn Farm.



27

WKL TILLIE 308T

PFC364958 WKL 308T 8 March 2007 Polled

BW	WW	YW	M	TM
1.7	19	29	-2.6	7

SPARROWS ALLIANCE 513G(P)
 HFCC PLD BOND 19L(P)
 HFCC ELVIRA 36C(P)
 PCC EASTON 458P(P)
 BKJ BUCKAROO 836H
 PRAIRIE COVE MISS 212M(P)
 SPARROWS TEMPEST 174K(P)
 SUNNYMEDES FOURSTAR 4E(P)
 MARVERN HANNIBAL 3H(P)
 MARVERN ELOISE 5E(P)
 IDLE DREAM MARNIE 2M(P)
 MARVERN ICE 1B(P)
 IDLE DREAM DINAH 1D(P)
 MISS FAIRMONT ICETTE 16R

This excellent yearling heifer has caught our eye since she was a few months old and only missed a spot in our show string because of her March birthdate. She shows excellent spring and depth of rib but puts it together in a very neat and feminine package. She will be a strong producer in any cowherd.

Exposed to WKL Mr. Bigshot 2125 April 13-July 21.

Consigned by: Langstaff Charolais.



PCC Easton 458P
 Sire of Lot 27

BRED HEIFERS

28

JSR MYSTIQUE 97T

PFC358887 JSR 97T 24 March 2007 Polled

BW	WW	YW	M	TM
2.2	22	45	15.1	26

LHD MR PERFECT Y416(P)
 LHD CIGAR E46(P)
 LHD MS CLASSIC BELL X613
 JSR TRUMP 7N(P)
 HTA SKYLITER PLD 23Z(P)
 A-JAY'S HEIDI 450C
 MISS FHF TEMPTATION 36T
 KJP SKY FIRE 51T(P)
 HTA WHITEHOT 105A(P)
 SPARROWS PRISCILLA 8735W(P)
 NOR MISTIQUE 7L(P)
 SILVERBIRCH STRIKE 76E(P)
 NOR MISTIQUE 8J(P)
 NOR MYSTIQUE 37G(P)

A broody Trump Daughter from one powerful White Hot dam. We have Trump daughters in production and they are outstanding producers. Her mating to Freedom should produce great results.

Bred May 6 to SVY Freedom.

Consigned by: Saunders Charolais.



NOR Mystique 7L
 Dam of Lot 28

29

ACC CECILIA 746T

PFC360381 ACC 746T 1 April 2007 Polled

BW	WW	YW	M	TM
5.7	27	45	7.4	21

SPARROWS ALLIANCE 513G(P)
 SPARROWS COSSACK 11L(P)
 HVR DANA 11D
 ACC HERCULES 31R(P)
 WIESE'S EXACTOR 15A(P)
 RLTC MISS TRIM 14C(P)
 RLTC MISS TRIM 4A(P)
 HTA WHITEHOT 105A(P)
 HTA HARD COPY PLD 621F(P)
 HTA SNOWBALL PLD 439D(P)
 HFCC CECILIA 803H(P)
 HFCC HIGHLITER 6D(P)
 HFCC CECILIA 622F
 HFCC CECILIA 27D(P)

Bred April 11 to Sparrows Ransom, checked safe.

Out of the 2007 BOSS Show Bull and National Champion, ACC Hercules 31R, this heifer is sweet. If that's not enough, there is lots of horsepower on the maternal side as well. Her dam is HFCC Cecilia 803H, one of the most powerfully made cows to walk our pastures. Her dam and sister sell in the Sharing the Excitement Sale.

Consigned by: Andemar Cattle Co.



HFCC Cecilia 803H
 Dam of Lot 29

BRED HEIFERS

30

WKL TRINITY 505T

PFC364962 WKL 505T 5 May 2007 Polled

BW	WW	YW	M	TM
2.1	23	38	-0.6	11

- SPARROWS ALLIANCE 513G(P)
- HFCC PLD BOND 19L(P)
- HFCC ELVIRA 36C(P)
- PCC EASTON 458P(P)
- BKJ BUCKAROO 836H
- PRAIRIE COVE MISS 212M(P)
- SPARROWS TEMPEST 174K(P)
- RGP EUREKA 17E(P)
- DEPAUL LEADER 4L(P)
- DEPAUL GRACE 47G(P)
- WKL PEGGY 330P(P)
- DEPAUL SIR MAC 11D(P)
- WKL BABY SPICE 402H(P)
- DEPAUL FANCIFUL 64F(P)

One of our promising Easton daughters, she is a young junior yearling that is sure to turn herds. With a mother that carries an abundance of milk, we are confident she will make a great cow to some lucky buyer.

Bred AI to PCC Navigator 403P March 24, exposed to WKL Mr Big Shot 212S April 13 - July 21.

Consigned by: Langstaff Charolais.



SHOW PROSPECTS

31

WHISKEY HOLLOW UNIQUE 2U

WHC 2U 2 January 2008 Twin Polled

BW	WW	YW	M	TM
3.6	26	45	7.7	21

- SPARROWS ALLIANCE 513G(P)
- SPARROWS COSSACK 11L(P)
- HVR DANA 11D
- ACC HERCULES 31R(P)
- WIESE'S EXACTOR 15A(P)
- RLTC MISS TRIM 14C(P)
- RLTC MISS TRIM 4A(P)
- LT UNLIMITED EASE 9108(P)
- BALDRIDGE FASTTRACK 82F(P)
- BALDRIDGE SWEETHEART 53D
- CIRCLE CEE RUMOUR 206M(P)
- SLY EASTWOOD PLD 32F(P)
- CIRCLE CEE ALEX 9K(P)
- BAR 19 TOO PERFECT 402D

Wow! One of our first Hercules heifer calves to sell. She's thick, correct and has an extra measure of style. Her dam calves early and raises a great calf every year, this year she's raising a great set of twins. Her sire really needs no introduction. Hercules is a two time Royal Grand Champion and is emerging as one of the premier sires of the breed. make sure you give this heifer a look on sale day. Consigned by: Whiskey Hollow Cattle Company.



ACC Hercules 31R
Reigning Canadian National Champion Bull

SHOW PROSPECTS

32

BLACKBERN UNCHARTED 8U

PFC367065 KBF 8U 3 January 2008 Polled

BW	WW	YW	M	TM
.8	18	36	4.5	14

EATONS PERFORMER 6709
 EATONS PREDICTOR 9230
 EATONS MISS BIG SANDY
 LT WESTERN SPUR 2061 PLD
 LT WYOMING WIND 4020 PLD
 LT MAIDEN'S BREEZE 8242P
 LT UNLIMITED MAIDEN 1131(P)
 HTA WHITEHOT 105A(P)
 HTA SPIRIT PLD 826H(P)
 HTA SARA PLD 640F(P)
 BLACKBERN SHAWNA 22S(P)
 HICKS KAPITAL 4K(P)
 BLACKBERN NELLY 11N(P)
 RRR TRICIA 19C

Uncharted is the perfect name for this fancy Spur baby. Sweet disposition, great haircoat and moderately framed, what more could you ask for. Her mama is doing a great job with her first calf and we're proud to bring her to you. Consigned by: Blackburn Farm.



33

CORNERVIEW UPTOWN GIRL 4U

PFC366149 BCN 4U 3 January 2008 Polled

BW	WW	YW	M	TM
2.0	30	60	5.4	20

SPARROWS MATADOR 7K
 SPARROWS ALCATRAZ 18N(P)
 SPARROWS BARMAID 218H(P)
 SPARROWS COACH 467S(P)
 SS MONTANA SILVER(P)
 SPARROWS VALIENTE 367P(P)
 SPARROWS VALIENTE 367M
 WCR PRIME CUT 764 PLD
 LT RIO BLANCO 1234 P(P)
 LT PRAIRIE MAID 4054
 CORNERVIEW SAVANA 4S(P)
 B&M BENJI'S LAD 23G(P)
 CORNERVIEW MERCEDES 19M(P)
 CORNERVIEW MAXIGIGGLE 23G(P)

Uptown Girl is in our 2008 show-string because she is a high-volume calf with major depth of body and a long, wide top. She is one of our first calves out of Sparrow's Coach. Her mother (BCN 4S) is a picture-perfect Rio daughter with lots of style and lots of milk. We would like to retain the show rights until after the Royal Agricultural Winter Fair in November. An excellent prospect for youth members looking for a 4-H project. Consigned by: Cornerview Charolais.



Cornerview Savana
 Dam of Lot 33

SHOW PROSPECTS

34 ROLLIN' ACRES FLASH 803U

FC367751 HDT 803U 4 January 2008

BW	WW	YW	M	TM
2.9	7	11	4.5	8

RAVISSANT
MONTAGNARD
FANFARE
ROLLIN ACRES TOP NOTCH9P (FF)
RAINBOW 7N MR 13S
PCFL OLIVIA 14J
PCFL FALLINA 117Z
HISMAN
PCFL KODY 5E (FF)
PCFL BRIANNE 6U
ROLLIN ACRES KARLA 5K
RAINBOW 7N MR 13S (FF)
ROLLIN ACRES GLAMOR 3G
MVCF RED ACE 20E

Rollin' Acres Flash, like all our lots, is 1/2 French and maintains the great characteristics of the French breed, having a positive influence on any herd.

Consigned by: Rollin' Acres Charolais.



35 BRIDOR UPLIFTING 5U

PFC366705 BMA 5U 6 January 2008 Polled

BW	WW	YW	M	TM
2.1	28	55	8.4	22

HTA WHITEHOT 105A(P)
BRIDOR HALDREY 5H
BRIDOR ELENOR 3E(P)
HICKS KASINO 11K(P)
MNE EXCLUSIVE 17E(P)
RPJ TAMMY FAY 82G(P)
RPJ TAMMY 531E(P)
LT UNLIMITED EASE 9108(P)
BALDRIDGE FASTTRACK 82F(P)
BALDRIDGE SWEETHEART 53D
BRIDOR PHOEBE 9P(P)
PF IMPRESSED 620 P ET(P)
BRIDOR MIA 71M(P)
AIT VERMUR CHAROLETTE 2C

Here is a beauty of a calf. She has a Fasttrack mother who is doing a great job.

She is by none other than Hicks Kasino 11K, Boss Show Bull of 2002. Here you go 4-H members. Have a close look here.

Consigned by: Bridor Charolais.



Hicks Kasino 11K
Sire of Lot 35

SHOW PROSPECTS

36

MEDONTE UNFAITHFUL 6U

PFC366657 XAL 6U 5 January 2008 Polled

BW	WW	YW	M	TM
3.3	18	33	7.6	17

SPARROWS ALLIANCE 513G(P)
 HFCC PLD EVOLUTION 5L(P)
 HFCC ELVIRA 916J(P)
 SVY FREEDOM PLD 307N(P)
 RA BIG CAT 9017 PLD(P)
 SVY PURRFECT 184L(P)
 SVY JUSTLIKEPERFECT 432D
 KEYS POLLED COMPASS(P)
 SVY FRANCHISE PLD 738G(P)
 LVY PILLOW TALK 904Y
 MEDONTES KEEPSAKE 1K(P)
 CHARDEL REEBOK 10Y
 MEDONTES GLAMOUR 3G
 ROSSDALE MS HOUDINI 3Y

Medonte Unfaithful 6U is a smooth polled Freedom daughter out of Keepsake 1K. The Keepsake cow has produced 4 bulls and 4 females to date. Every bull she has produced has been the first to sell in their respective years. Of the females, the only other one we've sold was purchased by Saunders Charolais. This cow family is as consistent producing as any other in the herd. Unfaithful should follow in her mother's foot steps. Consigned by: Medonte Charolais.



37

ROLLIN' ACRES DAZZLE 807U

FC367753 HDT 807U January 2008

BW	WW	YW	M	TM
3.4	8	16	1.4	5

RAVISSANT
 MONTAGNARD
 FANFARE
 ROLLIN ACRES TOP NOTCH9P(FF)
 RAINBOW 7N MR 135
 PCFL OLIVIA 14J
 PCFL FALLINA 117Z
 COOPER
 JEZABEL
 OASIS
 PCFL NORMANDIE 40H(FF)
 BATEAU
 PCFL KALIN 50E
 PCFL ELLEN 31Y

Rollin' Acres Dazzle is one of our top performing heifer calves this year. Her Full French influence gives her the potential to be a top performing heifer in your herd. Don't miss out on this fancy little female! Consigned by: Rollin' Acres Charolais.



38

JSR VICTORIA 33U

PFC366154 JSR 33U 10 January 2008 Polled

BW	WW	YW	M	TM
5.4	21	36	11.5	22

SPARROWS ALLIANCE 513G(P)
 HFCC PLD EVOLUTION 5L(P)
 HFCC ELVIRA 916J(P)
 SVY FREEDOM PLD 307N(P)
 RA BIG CAT 9017 PLD(P)
 SVY PURRFECT 184L(P)
 SVY JUSTLIKEPERFECT 432D
 BR DUKE 261(P)
 DVCR DUKE 818P(P)
 WCR MISS MAC IV 534
 JSR VICTORIA 38N
 WAT-CHA AMALGAMATED 25A(P)
 NOR VICTORIA 8D
 NOR VICTORIA 27U

This heifer will be very competitive on the show road this fall. She has ample thickness and depth of body while remaining very attractive through her front end. A full sister was purchased by Pine Lane Farms in last year's sale. Show rights reserved through the Royal Winter Fair. Consigned by: Saunders Charolais.



SHOW PROSPECTS

39

JSR BOBBI 45U

PFC366155 JSR 45U 16 January 2008 Polled

BW	WW	YW	M	TM
3.8	19	32	7.9	17

DYV CLEARCUT 14H(P)
 SVY WIDE CUT 20K
 VMN DELILAH 615F
 JSR EQUITY 17M(P)
 JWK IMPRESSIVE D040 ET(P)
 JSR JASMINE 40J(P)
 DLS SPECIAL LADY 40G
 LHD MR PERFECT Y416(P)
 LHD CIGAR E46(P)
 LHD MS CLASSIC BELL X613
 JSR BOBBI 33P(P)
 SVY BEDROCK PLD 816H(P)
 JSR BOBBI 24L
 LAND O LAKES BOBBI 1B(P)

This heifer stems from the legendary Bobbi cow family. She is being shown as a junior project this year and will be very competitive. Show rights reserved through the Royal Winter Fair.
 Consigned by: Saunders Charolais.



JSR Equity 17M

40

WHC UNBELIEVABLE 9U

WHC 9U 17 January 2008 Polled

BW	WW	YW	M	TM
5.7	27	45	7.4	21

SPARROWS ALLIANCE 513G(P)
 SPARROWS COSSACK 11L(P)
 HVR DANA 11D
 ACC HERCULES 31R(P)
 WIESE'S EXACTOR 15A(P)
 RLTC MISS TRIM 14C(P)
 RLTC MISS TRIM 4A(P)
 KEYS HANDYMAN PLD 255H(P)
 MSW Y2K(P)
 SVS FIREBALL 19F(P)
 JSR MYSTIQUE 52M(P)
 HTA WHITEHOT 105A(P)
 NOR MYSTIQUE 27K(P)
 NOR MYSYTIQUE 50H(P)

This was a tough decision. I've been waiting for 52M to have a heifer calf to put in the replacement pen and I go and consign her to Uppin' the Ante. 52M has sons working in some good commercial herds in our area, but 9U could be her best calf yet! Sired by the reigning Canadian National Champion and from a never miss cow from the Saunders program, 9U will definitely be one to look for come sale day. Juniors take advantage of the sale incentives as this calf would make a competitive 4-H project.
 Consigned by: Whiskey Hollow Cattle Company.



SHOW PROSPECTS

41

BRIDOR UNREAL 28U

PFC366713 BMA 28U 26 January 2008 Polled

BW	WW	YW	M	TM
2.7	29	65	10.8	25

WCR SIR PERFECTION 734
 LHD MR PERFECT Y416(P)
 LHD MS SHOWME OFF W159
 SOS POLLED DETONATOR 8M(P)
 THE HHP MONTE CARLO 1ST(P)
 P-3 LADY MONTE 0-80Z(P)
 P-3 LADY MIDAS 6-130U(P)
 LT RIO BLANCO 1234 P(P)
 KCM RIO CHICO 429P(P)
 KCM VENUS 208M(P)
 BRIDOR STACEY 27S
 RGP EUREKA 17E(P)
 BRIDOR JESSIE 3J(P)
 BRIDOR CATHY 3B

Here is a fancy, fancy SOS Polled Detonator daughter out of a two-year-old KCM RIO CHICO daughter that had the attention of the selection group. Don't miss out on her, 4-H'ers.

Consigned by: Bridor Charolais.



42

ROLLIN' ACRES SHIMMER 818U

FC367752 HDT 818U 2 February 2008

BW	WW	YW	M	TM
2.3	7	15	1.6	5

COOPER
 JEZABEL
 OASIS
 PCFL ULTIMATE 14R(FF)
 BATEAU
 PCFL KALIN 50E
 PCFL ELLEN 31Y
 RAINBOW 7N MR 13S(FF)
 PCFL NORDUFF 38H(FF)
 PCFL FINESSE 21Z
 ROLLIN ACRES JULIE 17L
 PCFL KODY 5E(FF)
 ROLLIN ACRES JOANNE 64J
 ROLLIN ACRES GLAMOR 3G

Rollin' Acres Shimmer is one of the thickest, deepest bodied females you will come across this fall. She is an attractive, long sided female with lots of eye appeal.

Consigned by: Rollin' Acres Charolais.



PCFL Ultimate 14R
 Sire of Lot 42

Presented by...



Andemar Cattle Co. • Peter & Ande Neal

RR 7, St. Mary's, ON • paneal@xplornet.com

Tel: 519.284.9986 • Cell: 519.871.4703 • www.andemarcattleco.com



Langstaff Charolais • Kelly Langstaff & family

RR 5, Wallaceburg, ON • tlangstaf4@hotmail.com

Tel: 519.627.3464.9986 • Cell: 519.358.3468



Blackbern Farm • Keith & Karen Black

RR 1, Foresters Falls, ON • microzier@hotmail.com

Tel: 603.646.2673



Medonte Charolais • Allan, Brenda, Allison & Lindsay Miller

4967 Line 5, Hillsdale, ON • medonte@sympatico.ca • Tel: 705.835.3310



Bridor Charolais • Brian & Doris Aitken

RR 3, Mount Forest, ON • bridor@wightman.ca

Tel: 519.323.2538



**Saunders Charolais • John & Marie,
Brent & Marni, Darrell & Billie Jo**

RR 3, Markdale, ON • saunders@bmts.com • Tel: 519.986.4165



Cornerview Charolais • Brian & Heather Coughlin

RR 3, Cobden, ON • cornervu@nrtco.net • Tel: 613.646.9741

www.cornerviewcharolais.com



Whiskey Hollow Cattle Co. • Gord & Shauneen Tomlinson

RR 4, Norwood, ON • gstomlinson@sympatico.ca

Tel: 705.696.3567 Cell: 705.930.0156



Hidden Trail Charolais • Brett Coughlin

RR 3, Cobden, ON • cornervu@nrtco.net

Tel: 613.646.9741



**Rollin' Acres Charolais • Chester & Karla,
Michael & Shannon Tupling**

RR 3, Shelburne, ON • rollinacres@btms.com

Tel: (Chester) 519.925.2938 Tel: (Michael) 519.925.6794